

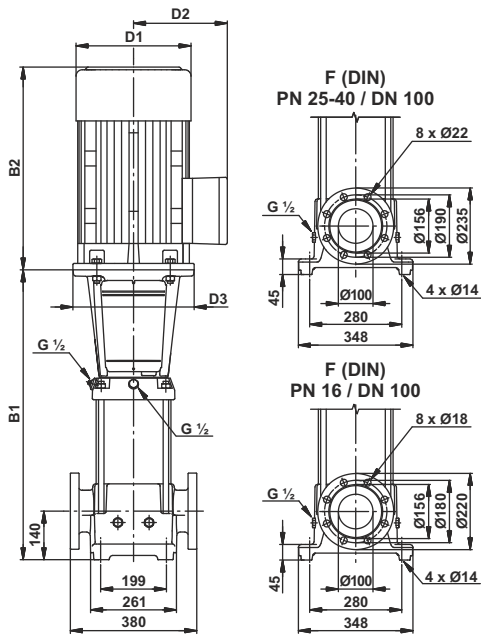
# Technical Data

Vertical multistage centrifugal pumps

## LCR 90

Performance Chart

Pump Type	H.P.	kW	Q l/min m <sup>3</sup> /h	n = 2900 rpm					
				1000.0	1250.0	1416.7	1500.0	1666.7	1833.4
				60.0	75.0	85.0	90.0	100.0	110.0
LCR 90/1-1	7.50	5.50	H mts.	20	17	15	14	11	7
LCR 90/1	10.0	7.50		25	23	22	20	18	14
LCR 90/2-2	15.0	11.0		42	37	34	31	24	17
LCR 90/2	20.0	15.0		53	48	45	43	37	32
LCR 90/3-2	25.0	18.5		68	61	55	52	44	35
LCR 90/3	30.0	22.0		80	73	68	65	59	50
LCR 90/4-2	40.0	30.0		97	88	81	77	67	55
LCR 90/4	40.0	30.0		109	99	93	89	81	69
LCR 90/5-2	50.0	37.0		125	112	104	98	87	72
LCR 90/5	50.0	37.0		137	125	116	111	100	87
LCR 90/6-2	60.0	45.0		154	140	130	123	109	92
LCR 90/6	60.0	45.0		166	152	142	136	123	108



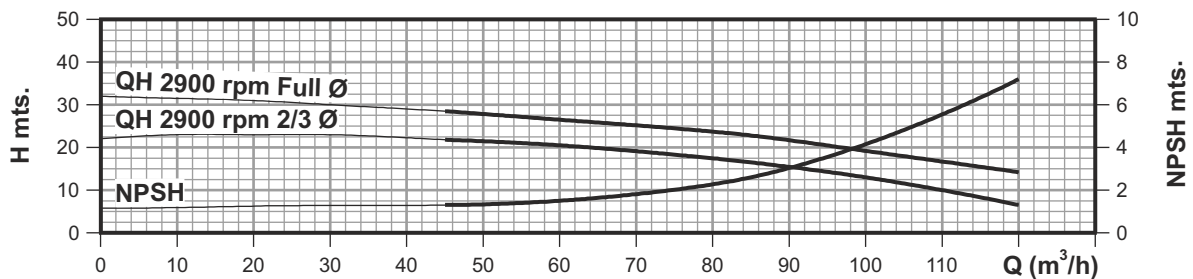
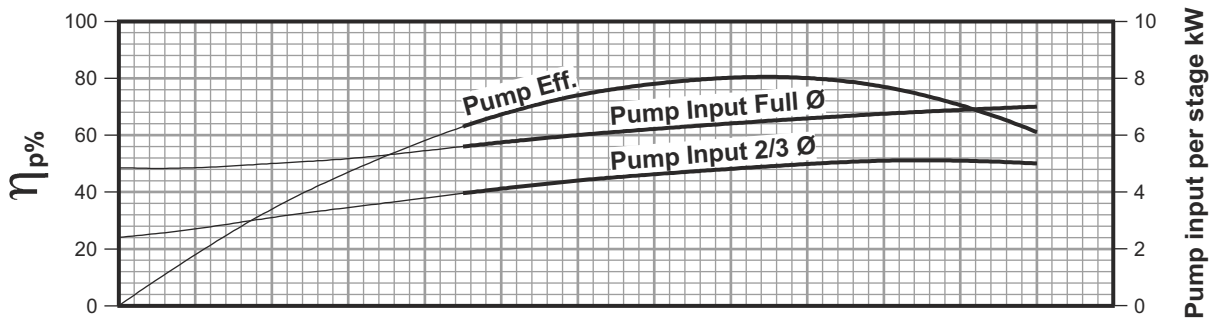
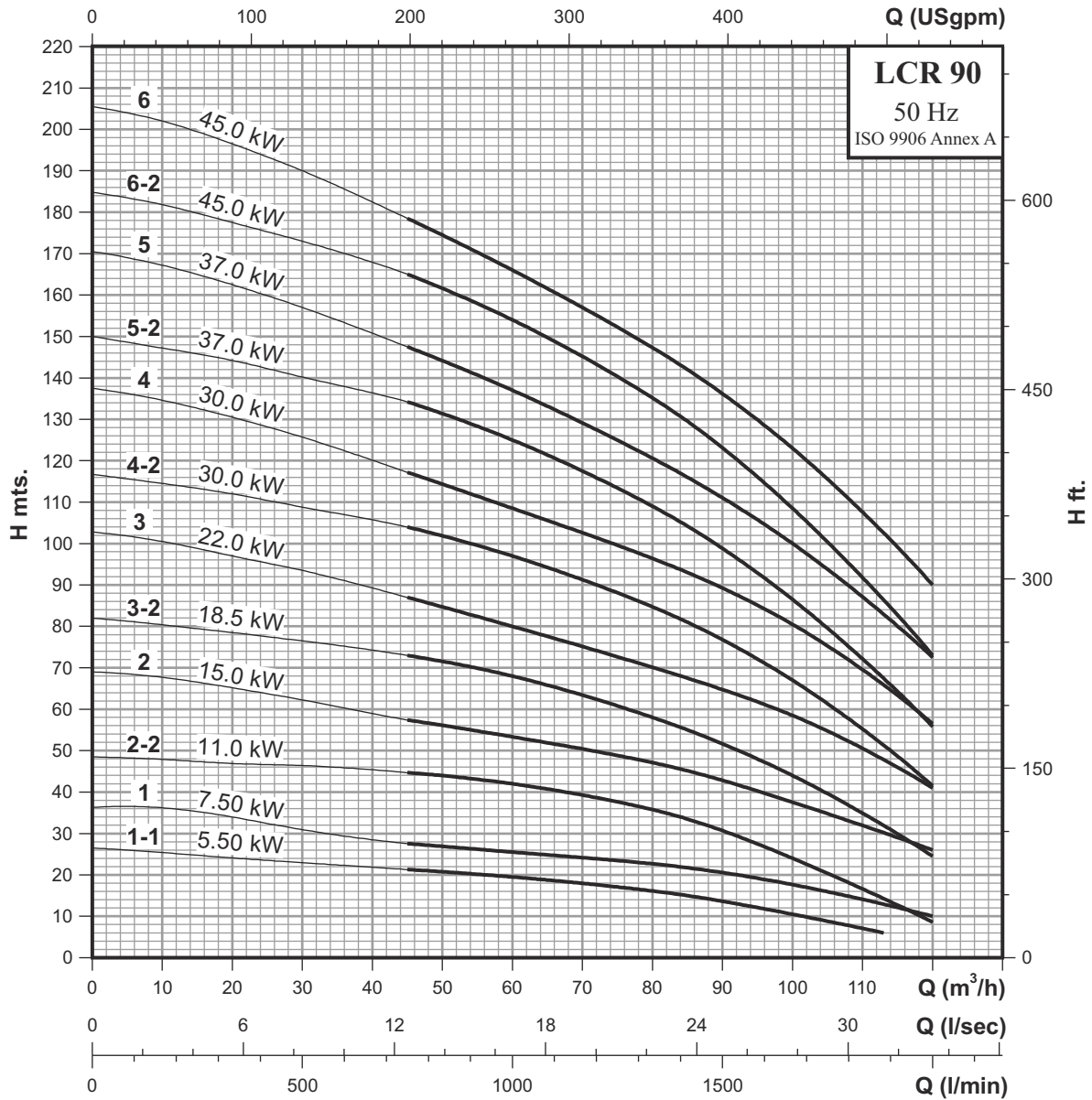
Dimensions & Weights of LCR Pump

Pump type	Dimensions [mm]					Net weight [kg]	Gross weight [kg]	Gross volume [m <sup>3</sup> ]
	DIN flange		D1	D2	D3			
	B1	B1+B2						
LCR 90/1-1	571	981	262	177	298	107.0	165.0	0.3745
LCR 90/1	571	981	262	177	298	109.0	167.0	0.3745
LCR 90/2-2	773	1315	304	225	350	150.0	208.0	0.3745
LCR 90/2	773	1315	304	225	350	164.0	222.0	0.3745
LCR 90/3-2	865	1407	304	225	350	214.0	284.0	0.4495
LCR 90/3	865	1475	363	262	350	245.0	315.0	0.4495
LCR 90/4-2	957	1603	415	300	400	326.0	396.0	0.4495
LCR 90/4	957	1603	415	300	400	326.0	396.0	0.4495
LCR 90/5-2	1049	1752	415	300	400	366.0	449.0	0.5370
LCR 90/5	1049	1752	415	300	400	366.0	449.0	0.5370
LCR 90/6-2	1141	1850	442	325	450	437.0	520.0	0.5370
LCR 90/6	1141	1850	442	325	450	437.0	520.0	0.5370

# Performance Curves

Vertical multistage centrifugal pumps

## LCR 90

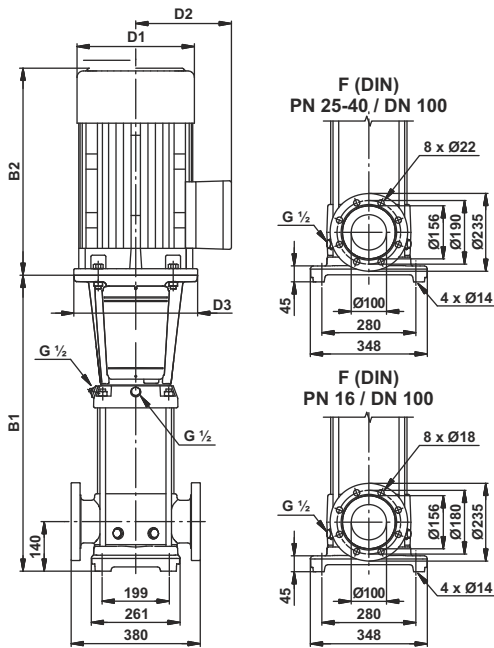


# Technical Data

Vertical multistage centrifugal pumps

## LCRI, LCRN 90

Performance Chart



Pump Type	H.P.	kW	Q l/min m <sup>3</sup> /h	n = 2900 rpm					
				1000.0	1250.0	1416.7	1500.0	1666.7	1833.4
				60.0	75.0	85.0	90.0	100.0	110.0
LCRI, LCRN 90/1-1	7.50	5.50	H mts.	20	17	15	14	11	7
LCRI, LCRN 90/1	10.0	7.50		25	23	22	20	18	14
LCRI, LCRN 90/2-2	15.0	11.0		42	37	34	31	24	17
LCRI, LCRN 90/2	20.0	15.0		53	48	45	43	37	32
LCRI, LCRN 90/3-2	25.0	18.5		68	61	55	52	44	35
LCRI, LCRN 90/3	30.0	22.0		80	73	68	65	59	50
LCRI, LCRN 90/4-2	40.0	30.0		97	88	81	77	67	55
LCRI, LCRN 90/4	40.0	30.0		109	99	93	89	81	69
LCRI, LCRN 90/5-2	50.0	37.0		125	112	104	98	87	72
LCRI, LCRN 90/5	50.0	37.0		137	125	116	111	100	87
LCRI, LCRN 90/6-2	60.0	45.0		154	140	130	123	109	92
LCRI, LCRN 90/6	60.0	45.0		166	152	142	136	123	108

Dimensions & Weights of LCRI, LCRN Pump

Pump type	Dimensions [mm]					Net weight [kg]	Gross weight [kg]	Gross volume [m <sup>3</sup> ]
	DIN flange		D1	D2	D3			
	B1	B1+B2						
LCRI, LCRN 90/1-1	571	981	262	177	298	107.0	165.0	0.3745
LCRI, LCRN 90/1	571	981	262	177	298	109.0	167.0	0.3745
LCRI, LCRN 90/2-2	773	1315	304	225	350	150.0	208.0	0.3745
LCRI, LCRN 90/2	773	1315	304	225	350	164.0	222.0	0.3745
LCRI, LCRN 90/3-2	865	1407	304	225	350	214.0	284.0	0.4495
LCRI, LCRN 90/3	865	1475	363	262	350	245.0	315.0	0.4495
LCRI, LCRN 90/4-2	957	1603	415	300	400	326.0	396.0	0.4495
LCRI, LCRN 90/4	957	1603	415	300	400	326.0	396.0	0.4495
LCRI, LCRN 90/5-2	1049	1752	415	300	400	366.0	449.0	0.5370
LCRI, LCRN 90/5	1049	1752	415	300	400	366.0	449.0	0.5370
LCRI, LCRN 90/6-2	1141	1850	442	325	450	437.0	520.0	0.5370
LCRI, LCRN 90/6	1141	1850	442	325	450	437.0	520.0	0.5370

# Performance Curves

Vertical multistage centrifugal pumps

## LCRI, LCRN 90

